

WINDSTATISTIC

GDR

April 09

	1	2	3	4	5	6	7	8	9	10	11	12	13	14	15	16	17	18	19	20	21	22	23	24	25	26	27	28	29	30	31
Windforce in BFT				3	4	5	3	5	3	4	3	5	4	5	6	3	3	4	5	5	7	6	4	3	3	3	3	3	2	4	
Windforce in KNTS				10	12	20	8	20	8	16	10	25	15	17	24	10	10	12	20	20	30	25	15	10	10	8	7	9	6	12	
							plui	N	SE	S/SINE	N	N	S	SW	SE		SE	E	N	N	N	NE	SE	E	E					SE	

Average force in BFT of the month:
4,0 BFT

Days min. 4 max 5 bft:
12 days
44,44 %

Days min 6 max .. bft:
3 days
11,11 %

Total days:
15

Total %:
55,56

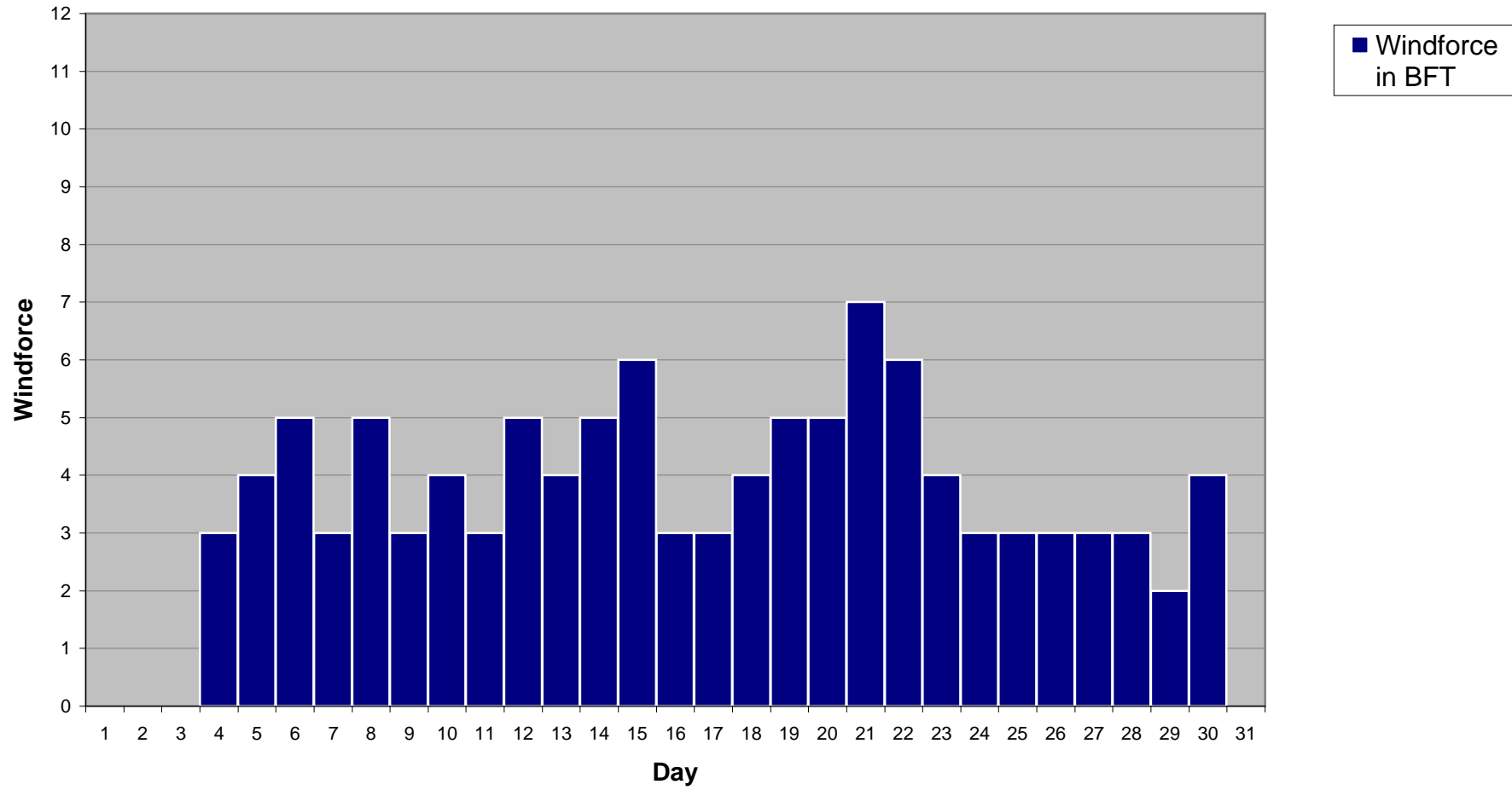
Average force of the month:
14,4 KNTS

Total days min 9KNTS / 3BFT:
22

Total %:
81,48

31.03.2010

Windstatistic



Windstatistic

