

WINDSTATISTIC

GDR

May 2015

	1	2	3	4	5	6	7	8	9	10	11	12	13	14	15	16	17	18	19	20	21	22	23	24	25	26	27	28	29	30	31
Windforce in BFT	2	5	4	4	3	4	5	5	3	4	4	6	4	4	9	10	4	5	3	5	8	8	8	6	8	10	4	5	4	4	5
Windforce in KNTS	6	21	16	14	9	12	21	20	10	13	14	22	13	14	45	50	15	17	11	20	40	35	40	25	35	50	15	17	14	15	19
comments	clow	sun	med	sun	sun	sun	sun	sun	sun	sun	sun	sun	med	med	med	sun	sun	sun	clow	clow	sun	sun	sun	sun	sun	sun	sun	sun	sun	sun	sun
Winddirection	all	S	SE	SE	S	E	SE	E	SE	SE	SE	SE	all	SE	N	N	NE	SE	all	N	N	N	N	N	N	N	NE	SE	E	SE	SE

Average force in BFT of the month:
5,3 BFT

Average force of the month:
21,5 KNTS

Days min. 4 max 5 bft:
18 days
58,06 %

Days min 6 max .. bft:
9 days
29,03 %

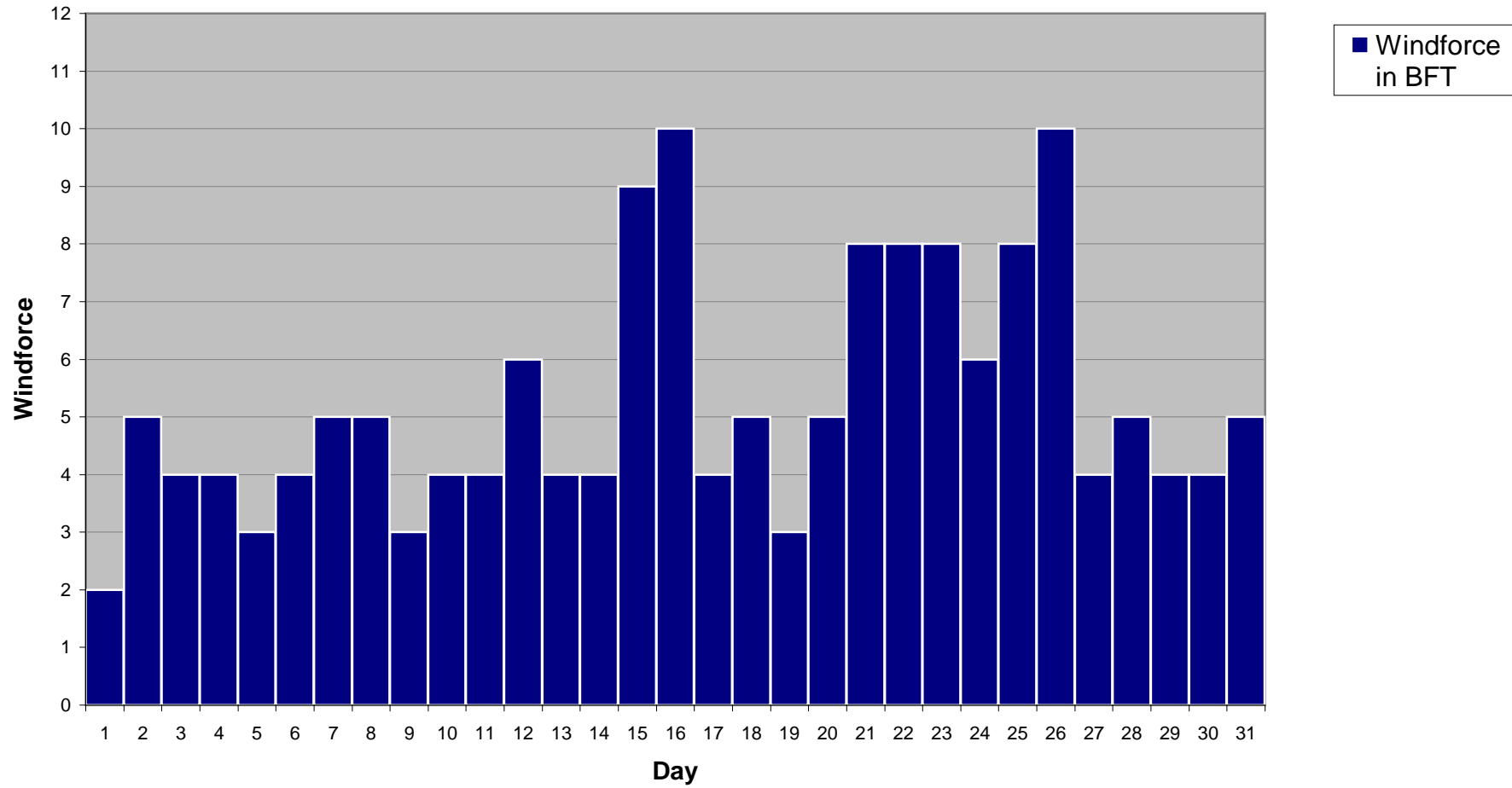
Total days:
27

Total %:
87,10

Total days min 9KNTS / 3BFT:
30

Total %:
96,77

Windstatistic



Windstatistic

