

WINDSTATISTIC

GDR

May 2014

	1	2	3	4	5	6	7	8	9	10	11	12	13	14	15	16	17	18	19	20	21	22	23	24	25	26	27	28	29	30	31
Windforce in BFT	4	8	10	4	6	7	3	4	4	3	3	4	6	7	7	4	4	4	6	3	4	3	5	4	5	2	4	4	5	6	6
Windforce in KNTS	12	40	55	12	25	30	11	15	14	8	8	13	25	30	30	14	16	12	22	10	12	10	20	14	17	5	15	15	20	24	23
comments	Clo	Sun	sun	Sun	Sun	mecc	mecc	sun	sun	mecc	clo	mecc	sun	sun	sun	sun	sun	sun	sun	clo	clo	sun	sun	sun	sun	rain	sun	mecc	sun	sun	sun
Winddirection	SE	N	N	SE	S	SW	SE	SE	E	E	N	NE	N	N	N	SE	NE	E	SE	E	E	SW	SW	SE	S		SE	SE	S	N	N

Average force in BFT of the month:
4,8 BFT

Average force of the month:
18,6 KNTS

Days min. 4 max 5 bft:
15 days
48,39 %

Days min 6 max .. bft:
10 days
32,26 %

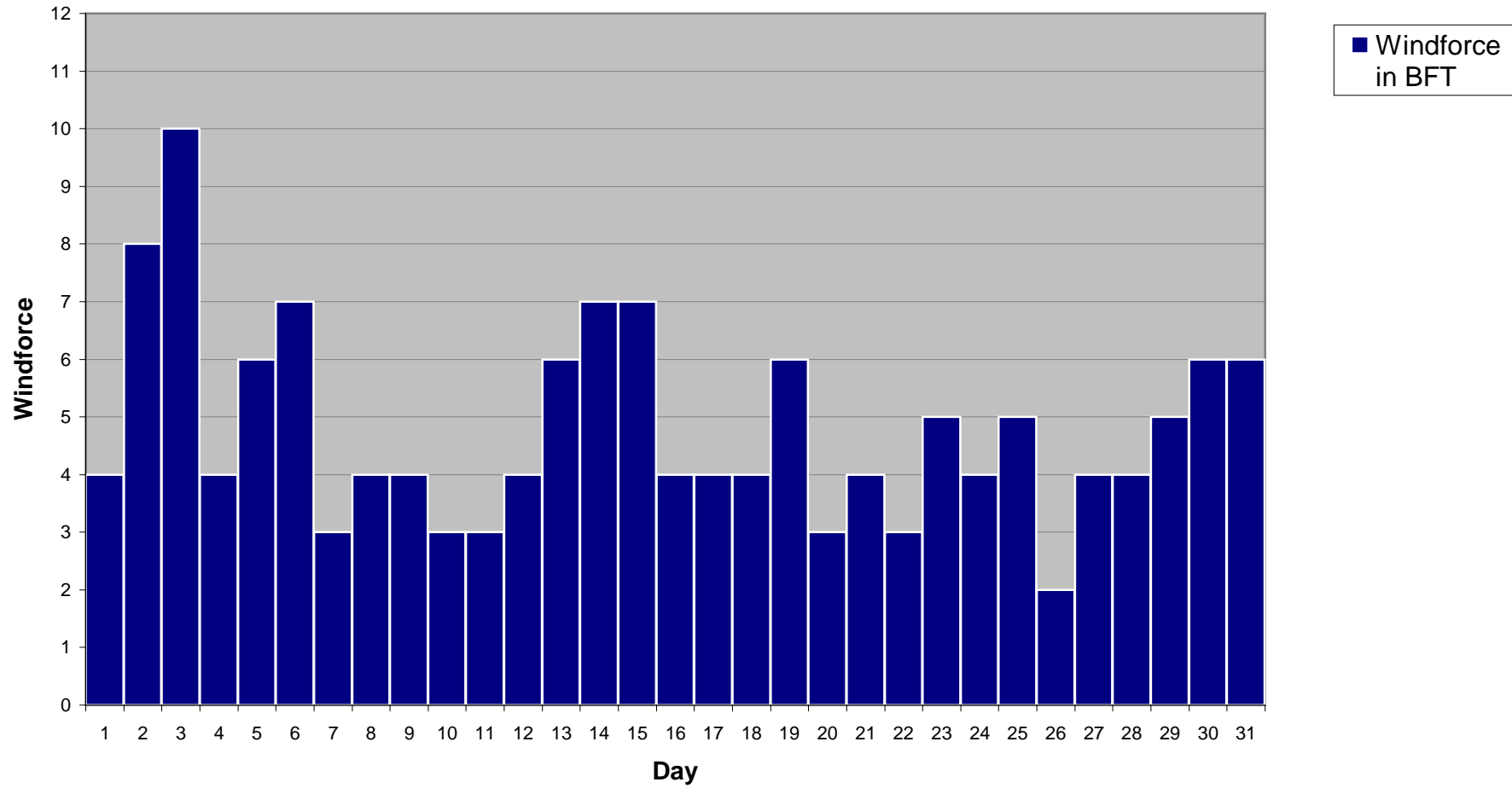
Total days:
25

Total %:
80,65

Total days min 9KNTS / 3BFT:
28

Total %:
90,32

Windstatistic



Windstatistic

