

WINDSTATISTIC

GDR

June 2014

	1	2	3	4	5	6	7	8	9	10	11	12	13	14	15	16	17	18	19	20	21	22	23	24	25	26	27	28	29	30	31
Windforce in BFT	6	4	4	5	6	3	4	5	4	3	4	4	4	6	8	3	4	3	4	4	4	3	4	3	3	3	5	6	3	5	
Windforce in KNTS	22	14	13	17	25	9	16	17	14	11	14	15	17	22	35	8	13	11	16	13	15	10	14	11	9	9	17	25	9	17	
comments	sun	sun	sun	sun	sun	med	sun	sun	sun	sun	sun	sun	sun	sun	sun	med	clo	clo	sun	sun	sun	clo	med	med	clo	clo	sun	sun	clo	sun	
Winddirection	NE	N	SE	SE	S/S	E	SE	S	SE	SE	SE	SE	SE	N	N	E	SE	SE	SE	SE	E	SE	SE	SE	SE	S	S	E	SE		

Average force in BFT of the month:
4,2 BFT

Average force of the month:
15,3 KNTS

Days min. 4 max 5 bft:
16 days
53,33 %

Days min 6 max .. bft:
5 days
16,67 %

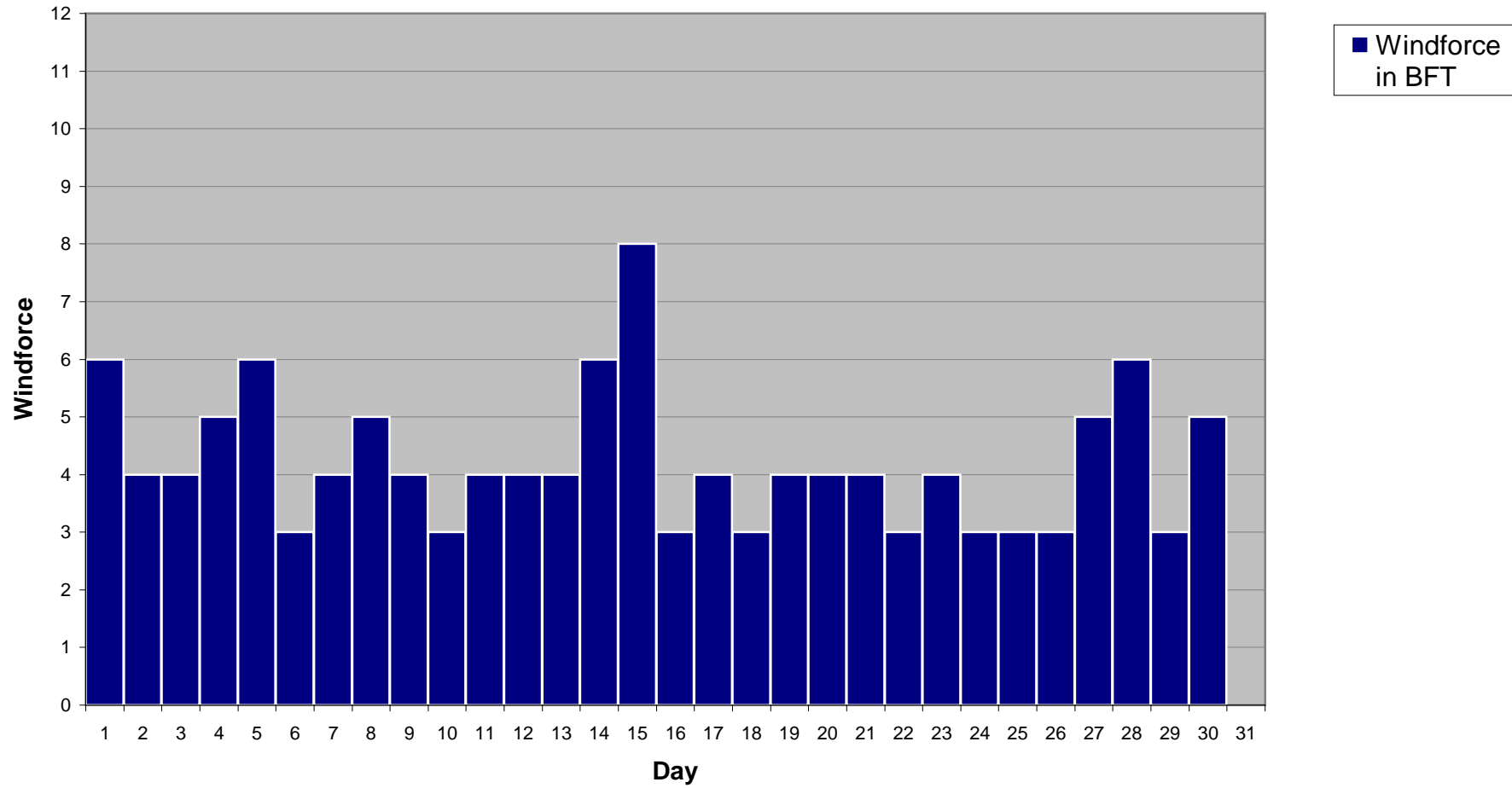
Total days:
21

Total %:
70,00

Total days min 9KNTS / 3BFT:
29

Total %:
96,67

Windstatistic



Windstatistic

