

WINDSTATISTIC

GDR

July 2014

| | 1 | 2 | 3 | 4 | 5 | 6 | 7 | 8 | 9 | 10 | 11 | 12 | 13 | 14 | 15 | 16 | 17 | 18 | 19 | 20 | 21 | 22 | 23 | 24 | 25 | 26 | 27 | 28 | 29 | 30 | 31 |
|-------------------|-----|-----|-----|-----|-----|-----|------|-----|-----|-----|-----|-----|-----|-----|-----|-----|-----|-----|-----|------|-----|-----|-----|-----|-----|-----|-----|-----|-----|-----|-----|
| Windforce in BFT | 6 | 4 | 4 | 4 | 5 | 6 | 1 | 4 | 7 | 3 | 6 | 5 | 4 | 4 | 5 | 4 | 4 | 5 | 4 | 3 | 6 | 7 | 5 | 5 | 3 | 4 | 4 | 2 | 7 | 5 | 4 |
| Windforce in KNTS | 25 | 14 | 13 | 15 | 18 | 25 | 3 | 14 | 30 | 10 | 22 | 18 | 13 | 13 | 17 | 12 | 14 | 20 | 13 | 10 | 22 | 30 | 17 | 17 | 10 | 14 | 14 | 7 | 30 | 17 | 14 |
| comments | sun | sun | sun | med | sun | sun | rain | med | sun | sun | sun | sun | med | sun | sun | sun | sun | sun | sun | rain | N | N | SE | SE | E | SE | SE | E | N | N | SE |
| Winddirection | S | SE | E | E | SE | SW | | SE | N | E | N | N | E | SE | SE | SE | SE | S | SE | | sun | sun | sun | sun | clo | sun | sun | clo | sun | sun | sun |

Average force in BFT of the month:
4,5 BFT

Average force of the month:
16,5 KNTS

Days min. 4 max 5 bft:
19 days
61,29 %

Days min 6 max .. bft:
7 days
22,58 %

Total days:
26

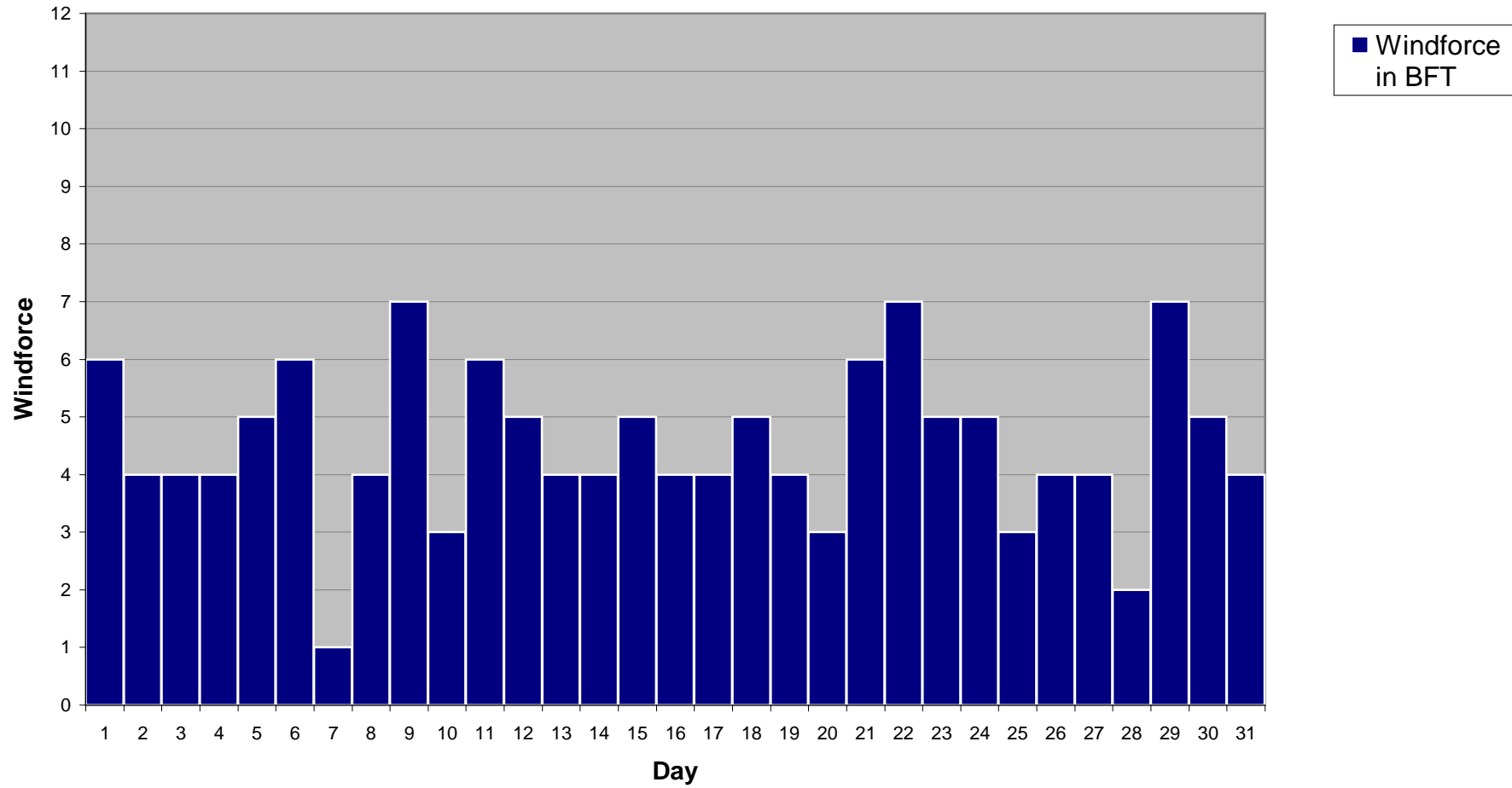
Total %:
83,87

Total days min 9KNTS / 3BFT:
29

Total %:
93,55

13/10/2014

Windstatistic



Windstatistic

