

WINDSTATISTIC

GDR

April 2014

	1	2	3	4	5	6	7	8	9	10	11	12	13	14	15	16	17	18	19	20	21	22	23	24	25	26	27	28	29	30	31	
Windforce in BFT												4	3	4	4	4	4	4	4	2	4	4	4	6	8	3	5	5	4	3		
Windforce in KNTS												15	10	15	12	12	14	14	16	5	12	12	13	22	35	11	17	19	15	8		
comments												sun	sun	sun	sun	sun	sun	clo	clo	clo	rain	clow	sun	sun	sun	sun	sun	sun	mecclo			
Winddirection												E	SE	S	E	SE	SE	SE	SE	E	E	E	NE	SE	S	N	S	E/S	SE	SE	N	

Average force in BFT of the month:
4,2 BFT

Average force of the month:
14,6 KNTS

Days min. 4 max 5 bft:
13 days
68,42 %

Days min 6 max .. bft:
2 days
10,53 %

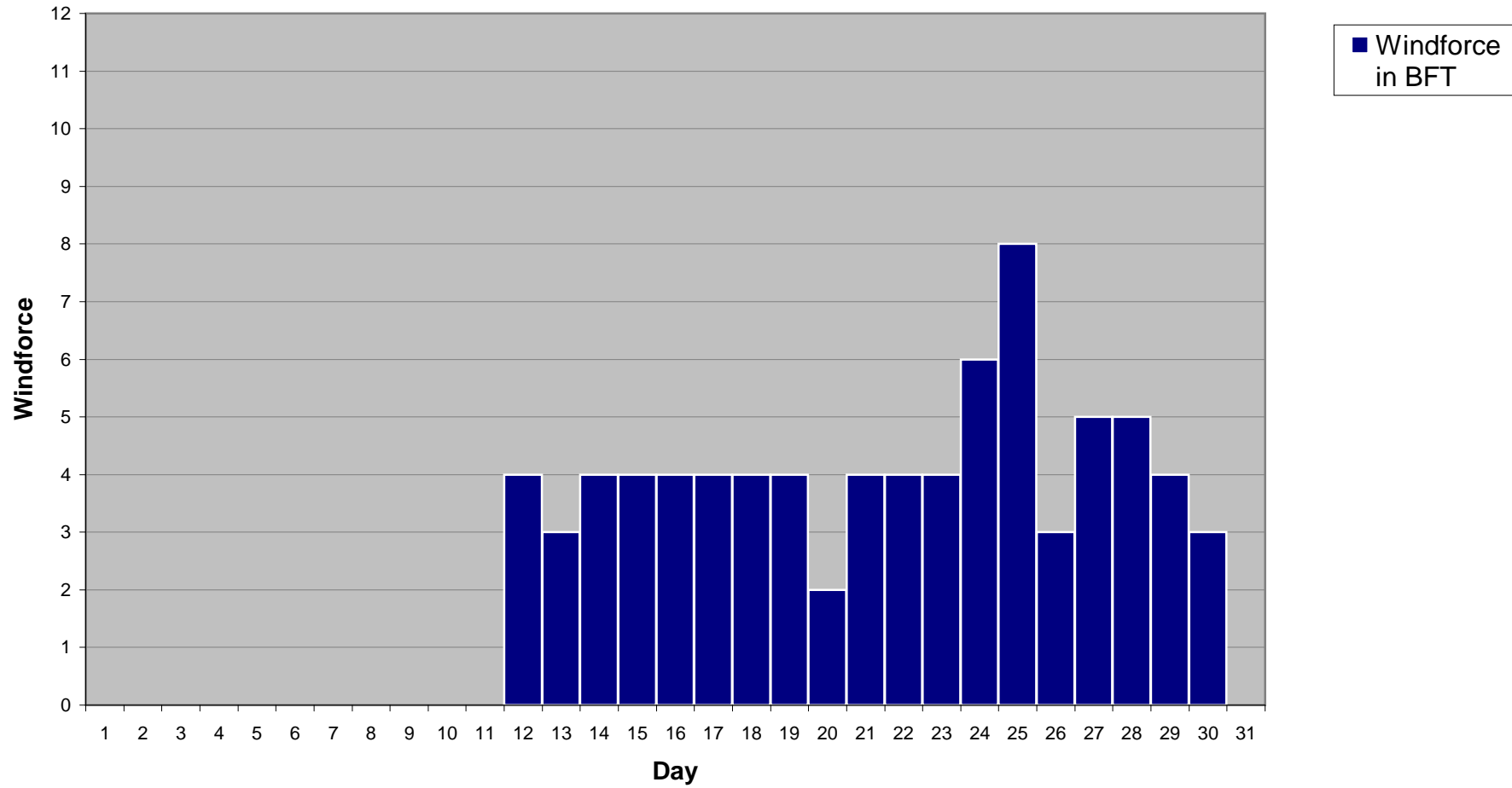
Total days:
15

Total %:
78,95

Total days min 9KNTS / 3BFT:
17

Total %:
89,47

Windstatistic



Windstatistic

